

SHRI VASANTRAO BANDUJI PATIL TRUST'S

'APPASAHEB BIRNALE COLLEGE OF ARCHITECTURE, SANGLI

(Approved by AICTE, C.O.A New Delhi, Affiliated to Shivaji University Kolhapur)
District – Sangli 416416

Policy statement on Water Conservation

INTRODUCTION

The primary solution to the current era's increasing concern over water scarcity is water conservation. Water governance-related issues haven't gotten enough attention. A dire situation exists in many sections of the country as a result of the mismanagement of water resources. In this perspective, our college is dedicated to sustainable water management and rainwater harvesting. We have implemented a number of initiatives to preserve water, including bore well recharge systems, water distribution system maintenance, and rainwater harvesting from rooftop runoffs. As a result, a policy for resource sustainability and water conservation is a necessity.

Objectives:

- To increase recharge of groundwater by capturing and storing rainwater, by rain water harvesting from rooftop and run-offs.
- To ensure continuous water supply to all sections in college premises.
- To reduce wastage of water.
- Cleanliness drive to prevent water runoffs and clogging of waste material into nearby water sources.

Water Resources in the Institute-

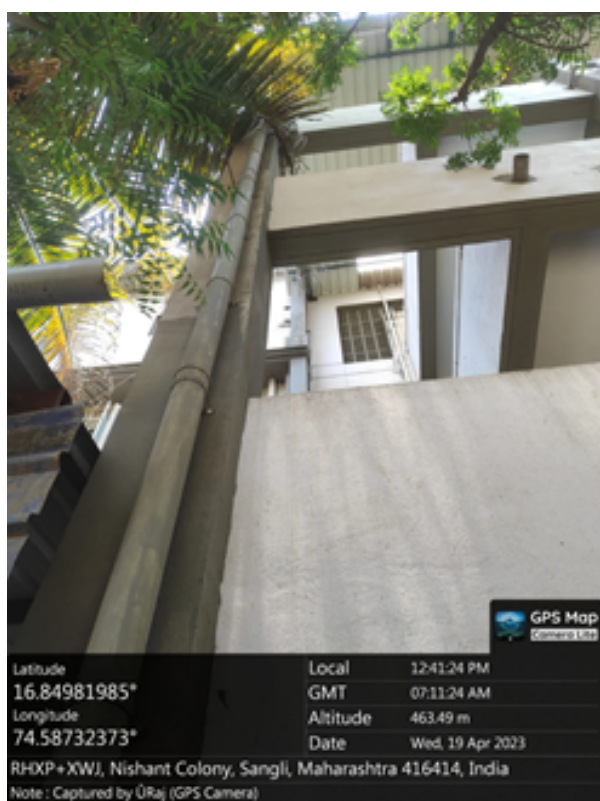
1. Bore well from where the water is stored in the five tank having a capacity of 2,000 liters each.
2. Provision of RO water purifier system purifies the water for drinking purpose.
3. For rain water harvesting, we have ground water recharge pits in the college campus. They consume the water into the ground and hence the rain water gets harvested properly.

Water conservation

Sr. No.	Water conservation facilities in institute
1	Rain water harvesting
3	Drip system for landscape
4	Maintenance of water distribution system in campus

Rain Water Harvesting

- The college gets all of its water from ground water.
- As a result, effective water use and adaption of water conservation techniques are crucial.
- Rainwater collected from roof tops is channeled through down take pipes and channelized into pits 1.5m x 1.5 m in size, built at all possible sites across the campus to recharge ground water, this helps in increasing the water table.



Down take pipe for rain water harvesting

Drip System for Landscape

Drip irrigation is a kind of micro-irrigation system that has the potential to conserve water by letting water drip gradually to plant roots from above the soil surface or from buried below the surface.

- In order to reduce evaporation, water must be delivered directly to the root zone.
- Through a system of valves, pipes, emitters, and tubing, drip irrigation systems disperse water.
- The institute's garden in the front and side margins have drip irrigation system installed to conserve water.



Drip System for water conservation

Maintenance of water distribution system

- Groundwater is pumped into five storage tanks on the terrace.
- A network of pipes is used to disperse the water.
- Water for all other purposes and water for RO plant is distributed through a different set of distribution pipes.

- To prevent leaks and water wastage through joints, valves, etc., the entire distribution system is closely monitored.
- All EWC are fitted with dual flush tanks which cuts down the water consumption.
- Each college staff and student are knowledgeable on how to use water wisely and effectively.



RO water purification system for drinking purpose



Amalgam

**VC. PRINCIPAL,
APPASAHEB BIRNALE COLLEGE
OF ARCHITECTURE, SANGLI.**



SHRI VASANTRAO BANDUJI PATIL TRUST'S

'APPASAHEB BIRNALE COLLEGE OF ARCHITECTURE, SANGLI

(Approved by AICTE, C.O.A New Delhi, Affiliated to Shivaji University Kolhapur)
District – Sangli 416416

Policy statement on Waste Management

. Introduction

Waste management is crucial since incorrectly disposed of garbage can have negative effects on one's health, safety, and finances. Humans must effectively and properly manage and store their garbage if they are to avoid harming the ecosystems and maintain a high standard of living.

By using efficient waste management techniques including segregation, recycling, and composting, ABCA, Sangli is deeply committed to preserving the environment, human health, and wellbeing.

Objectives

- To oversee the proper management and storage of waste on college property.
- To promote consciousness about the environment, encourage waste utilization.
- Minimization. Reuse, and recycling.
- To guarantee the secure management and storage of garbage on College property.
- In order to grow and encourage waste, it is important to develop environmental consciousness.
- Investing in the growth of recycling options on the college campus and turning garbage into goods with value-added.
- To make the campus plastic free.

Waste Management Policy

A) Degradable Waste Management:

- Dry waste, including dried leaves and twigs, be collected from all over the campus and utilized for composting.
- Use of trash cans for waste separation on campus.
- Using email, and what's App groups to electronically digitize workplace operations and reduce paper waste.

B) Non-Degradable Waste Management:

- This policy is mandatory for all stakeholders to abide with the practice of waste management in and outside the campus.
- Systematic garbage collection is required, including paper, plastic, metal, glass, and stationery.
- Collected non-biodegradable waste must be separated and sold to licensed vendors for recycling.
- The handling of e-waste is done by Wastecart, Miraj
- Everyone involved must follow this policy in order to manage waste from both inside and outside the campus.

Management of various types of degradable and non-degradable waste

Sr. No.	Facilities in institution for management of degradable and non-degradable waste
1	Solid Waste Management
2	liquid Waste Management
3	E-Waste Management

Solid waste management

ABCA, Sangli has implemented several processes in effectively managing waste at the campus. The working definition for solid waste is the unwanted or useless solid materials generated from daily activities in a given area.

The college provides resources for managing garbage, both biodegradable and non-biodegradable, to lessen negative effects on the environment and human health. For the handling of both biodegradable and non-biodegradable waste, many facilities are provided

Following are the points to handle waste management:

Different containers have been positioned across campus for the handling of solid waste.

- Adequate numbers of colour coded bins / containers or bags are provided. Dustbins are used to collect the garbage, which is disposed of into SMKC Sangli vehicles. Recyclable waste is segregated and disposed through vendors on need basis.
- Bio-degradable waste is composted under windrow composing method.
- The composting of horticulture waste, such as leaves and twigs, yields manure that is utilized in campus gardens.
- There is an incinerator in the women's restroom. It incinerates soiled sanitary napkins. It helps in saving the nature and college environment, the college adheres to the Menstrual Hygiene Management National Guidelines (December 2015) which is an integral part of the Swachh Bharat Mission Guidelines.

Liquid waste management

- Waste water from basins and toilets is connected to the corporation drainage system by underground pipelines.
- The rain water is collected and is discharged in the recharge pits which helps in raising the water table.
- The waste water generated from the RO system is used for flushing toilets.

E-Waste Management

- E-waste includes computer monitors, printers, scanners, keyboards, mouse, cables, memory chips, motherboard, compact discs, cartridges etc. this generated

e-wastes is given to e- waste collecting centre.

- Repairable computers are given to the vendors in buy back

Photos



Solid waste is collected by SMKC sanitary department



Composter to decompose the green waste to produce manure

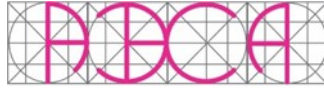


Biomedical waste management: incinerator in ladies room.



Appasaheb

**VC. PRINCIPAL,
APPASAHEB BIRNALE COLLEGE
OF ARCHITECTURE, SANGLI.**



SHRI VASANTRAO BANDUJI PATIL TRUST'S

'APPASAHEB BIRNALE COLLEGE OF ARCHITECTURE, SANGLI

(Approved by AICTE, C.O.A New Delhi, Affiliated to Shivaji University Kolhapur)
District – Sangli 416416

Policy statement on alternate sources of energy and energy conservation measures.

Introduction

The ABCA, Sangli's Alternative Energy Sources are designed for the correct implementation with successful usage of renewable energy sources in such a methodical way as to minimize its impact on the environment. An alternative energy source provides the chance for the student community to participate in campaigns for environmental protection.

Objectives of the Policy

- To evaluate our energy use and its environmental effect.
- To ensure the availability of required resources to meet our goals.
- To build photovoltaic solar panels for the production of alternative energy.
- To install LED lights throughout the whole campus to conserve energy.
- To deploy LED monitors across the whole campus to conserve energy
- To offer training on energy-saving techniques.

Scope of the Policy

All institutional departments must abide by the institution's energy policy, which also applies to all of its stakeholders and the numerous activities the institution engages in.

It will be able to realize our commitment to protecting natural resources and limiting their use by integrating efficiency and environmental awareness into our daily actions.

Under the direction of the college's principal, the energy policy, objectives, and targets will be evaluated on a regular basis.

Measures for Energy Conservation

- Use of LED monitors in the premises.
- Use of LED Tubes and bulbs in the entire building.
- Classrooms are provided with signage boards instructing switching off the light.
- Turning off the monitor after work.
- Use of fans and AC when needed.
- Avoiding use of more lights in classrooms, office, and seminar hall.

1. Alternate Sources of Energy and Energy Conservation

Sr. No.	Facilities for alternate sources of energy
1	Solar Energy
2	Use of LED monitors
3	Use of LED Bulbs

Solar energy

- The college is already in process of installing the solar panels to reduce the load on the electricity bills.
- The tender was float to get the quotation and work order finalized, the work has started on site.
- Solar power plant of 8 KV will be installed on the roof.

Use of LED monitors

- The college has a large number of electronic devices, such as computers, which have now become a requirement for any institute, and so on. 95 % of screens used in computer lab and cabin have LED screens.
- LED monitors require less electricity to achieve better results, resulting in a lower

demand.

- For non-renewable energy. Less power also means the college will spend far less for utilities.
- LED monitors require minimum maintenance, which saves the college money on maintenance.
- Lower Power Consumption
- Flicker free image hence less strain on eyes.
- LED Displays Have Short Response Time.



Use of LED Bulbs

- The necessity of energy saving should be instilled in students and employees.
- The college makes use of energy-efficient Compact Fluorescent Lamps and LED
- LED lighting consumes less energy and produces better results. LED systems are more expensive to install, but the amount saved on electricity quickly compensates.
- Longer life expectancy and lower environmental effect.

- Facilities that transition to LED lighting save 40-60% on energy.
- LED lights require little maintenance, which saves the college money. When it comes to their essential needs, it makes sense for institutions of higher learning to make a wise, efficient, and ecologically responsible decision.



Appasaheb

V.C. PRINCIPAL,
APPASAHEB BIRNALE COLLEGE
OF ARCHITECTURE, SANGLI.



SHRI VASANTRAO BANDUJI PATIL TRUST'S

'APPASAHEB BIRNALE COLLEGE OF ARCHITECTURE, SANGLI

(Approved by AICTE, C.O.A New Delhi, Affiliated to Shivaji University Kolhapur)
District – Sangli 416416

Policy statement on Disable friendly, Barrier free environment

POLICY FOR PERSONS WITH DISABILITIES:

The 2016 Act on the Rights of Persons with disability outlaws discrimination against people with physical and mental disability. The ABCA, Sangli recognises the need of fostering an environment of understanding and mutual respect in order to respect the dignity and value of each individual and enable them to participate fully to the development of Self, Institute, Society, and Country at large.

The Institute is to promote a complete and inclusive teaching and learning environment in which disabled students and staff are neither offended nor treated negatively. The Institute's policy recognizes that people with disabilities are significant human resources to the institution, and it tries to build an atmosphere that affords equal opportunity, protection for their rights, and full participation in the academic environment.

OBJECTIVES OF THE POLICY:

- To provide a regulatory framework for the effective delivery of services to Disabled Students and College Staff.
- To foster a supportive environment in order to prevent discrimination, exploitation, and exclusion of disabled students and staff from all aspects of work and education.
- This includes full involvement and equal chances for growth for people with disabilities.
- To facilitate the personal and professional development of students with varying abilities.
- Encouraging participation in all co-curricular and extra-curricular activities.
- Provide money allocation to meet the aforementioned objectives.

THE FOCUS OF THE POLICY IS ON THE FOLLOWING:

- To create a barrier-free environment for disabled and physically challenged people

by constructing ramps with railings and providing a lift.

- To provide the required signage, to allow disabled people to move freely.
- Adopt and implement the necessary facilities in accordance with the instructions of the Government of India as and when required.
- Functional washroom facilities should be provided for disabled person.
- Signage such as, lights, display boards, signposts are to be located.
- Learners with disabilities need to be adequately and appropriately supported in and out of the classroom.
- Extra time as per the university rules and writers are to be provided during examination

Disabled-friendly Barrier Free Environment

Sr. No.	Facilities
1	Ramps and lifts
2	Disabled friendly washrooms
3	Signage including tactile paths
4	Rest Room
5	Provision of lift

The institution strives to make its administration, programs, and extracurricular activities accessible to the students. Both the college administration and faculty members should be willing to address access issues and guarantee that any person with an impairment has appropriate/reasonable accommodations. The campus needs to be accessible to people with disabilities and barrier-free.

- The college offers handicapped individuals a ramp facility for access.
- The ramp's decreased slope makes wheelchair transportation simpler and safer.
- The college offers a lift that will allow all visitors, workers, students and individuals with disabilities to access the building without any barriers.
- A wheelchair can be used by the user either independently or with assistance.
- According to need, wheelchairs are positioned next to ramps.
- Additionally, there are accessible restrooms in colleges.

- It is constructed in accordance with the required standards to provide accessibility for those who are physically disabled.
 - The institute goes above and beyond to keep the bathrooms tidy and clean.
 - The sign board is placed outside the restrooms so that people may easily access it
 - The user of a wheelchair has the option of using it alone or with assistance.
 - Depending on the situation, the wheelchairs are placed near to the ramps.
- In the college, there are also accessible restrooms.

Ramps for easy access to premises



Disable friendly washroom

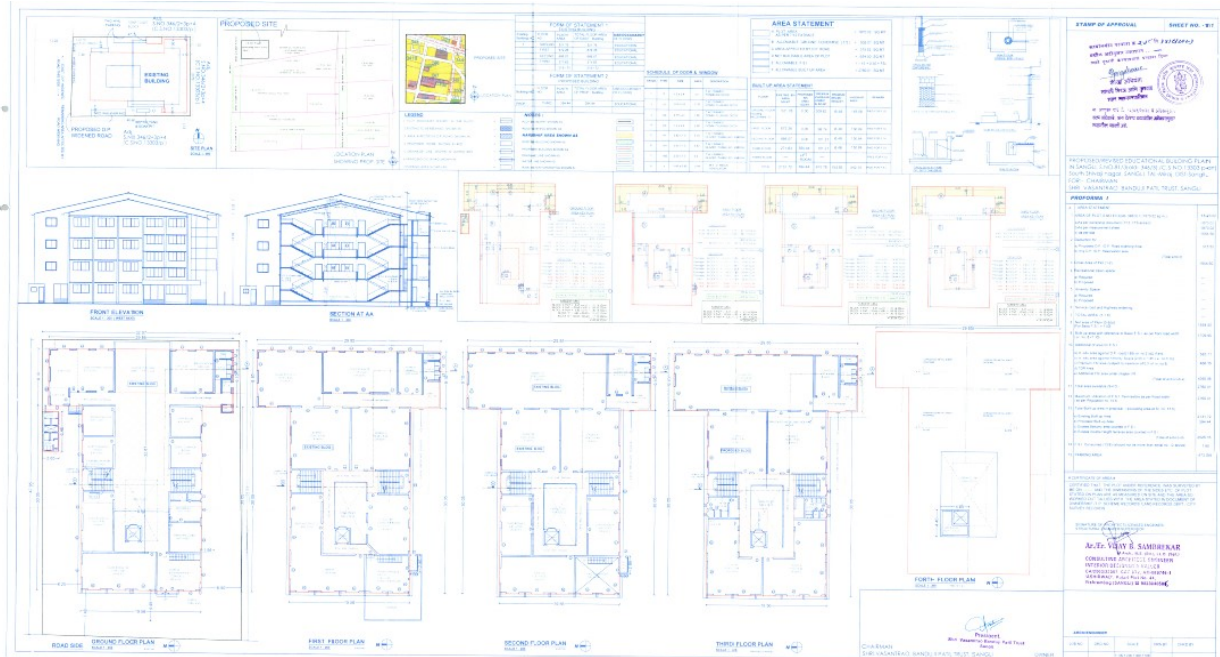


Rest room



Appasaheb
V.C. PRINCIPAL,
APPASAHEB BIRNALE COLLEGE
OF ARCHITECTURE, SANGLI.

Provision of lift sanctioned copy (proposed)



कार्यालयीन परवाना क्र. २४८ दि. १४/१२/२०२०
मधील अटीनुसार नकाशात
रंगाने दुरुस्ती केल्याप्रमाणे परवाना दिला

Dangalware
शाखा अभियंता
सांगली मिरज आणि कुपवाड
शहर महानगरपालिका

मा. आयुक्त यांचे दि. १६/०९/२०२० चे आदेशांनुसार



Appasaheb
V.C. PRINCIPAL,
APPASAHEB BIRNALE COLLEGE
OF ARCHITECTURE, SANGLI.

